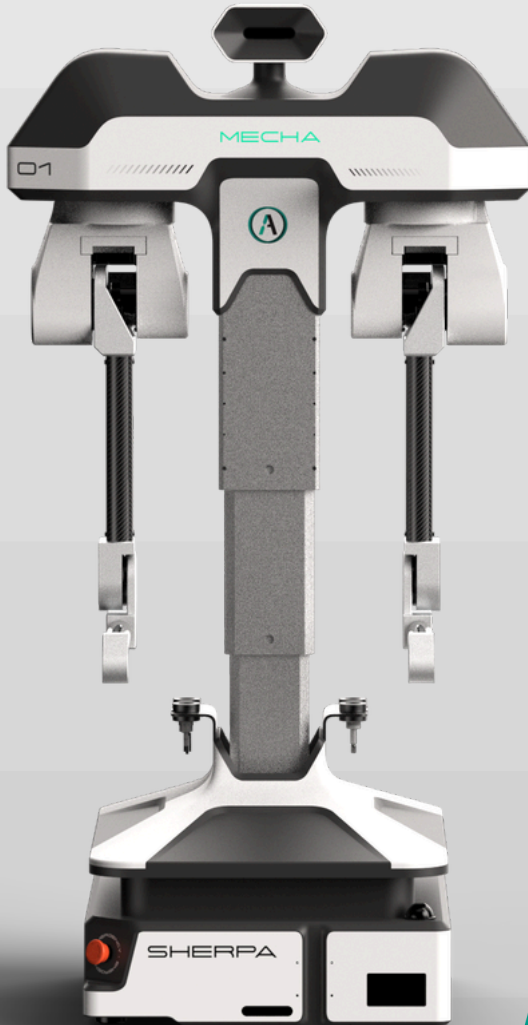


**Ati** / ROBOTICS

# SHERPA MECHA

DEXTEROUS | AGILE | CAPABLE



# SHERPA MECHA

Sherpa Mecha brings dual-arm manipulation to the Sherpa mobile platform. It pairs 19 degrees of freedom across two arms with a proven autonomous base, so drive, reach, and handle happen inside one continuous workflow. Mecha is built for light-to-medium payloads up to 12 kg, moving parts between bins, conveyors, workstations, and shelves without fixturing changes. Its torso extends, covering floor-level pickups through eye-level placements. 3D LiDAR and camera sensing keep Mecha aware of people and obstacles as it works on the shop floor

## Features

 Mobile Autonomy    Adjustable Reach    Versatile Handling    AI - Vision

## Sherpa Specifications

<b>WIDTH</b>	<b>580 mm</b>	<b>22 in</b>
<b>HEIGHT</b>	<b>1100 mm – 2000 mm</b>	<b>43 in – 78 in</b>
<b>REACH</b>	<b>900 mm</b>	<b>35 in</b>
<b>DEGREES OF FREEDOM</b>	<b>19°</b>	
<b>SENSORS</b>	<b>3D LiDAR and Camera</b>	
<b>PAYLOAD</b>	<b>12 kg</b>	<b>26 lbs</b>
<b>MAX SPEED</b>	<b>1.5 m/s</b>	<b>3.4 mph</b>
<b>HANDLING</b>	<b>Versatile Handling of Materials</b>	
<b>TYPE</b>	<b>55 Ah × 2</b>	
<b>CHARGING TIME</b>	<b>2 Hrs</b>	



USA | Mexico | South East Asia | India

Ati Robotics Inc.  
1750 W Hamlin Rd, Rochester Hills, MI 48309  
Web: [www.atirobotics.ai](http://www.atirobotics.ai)